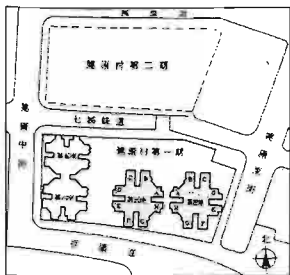
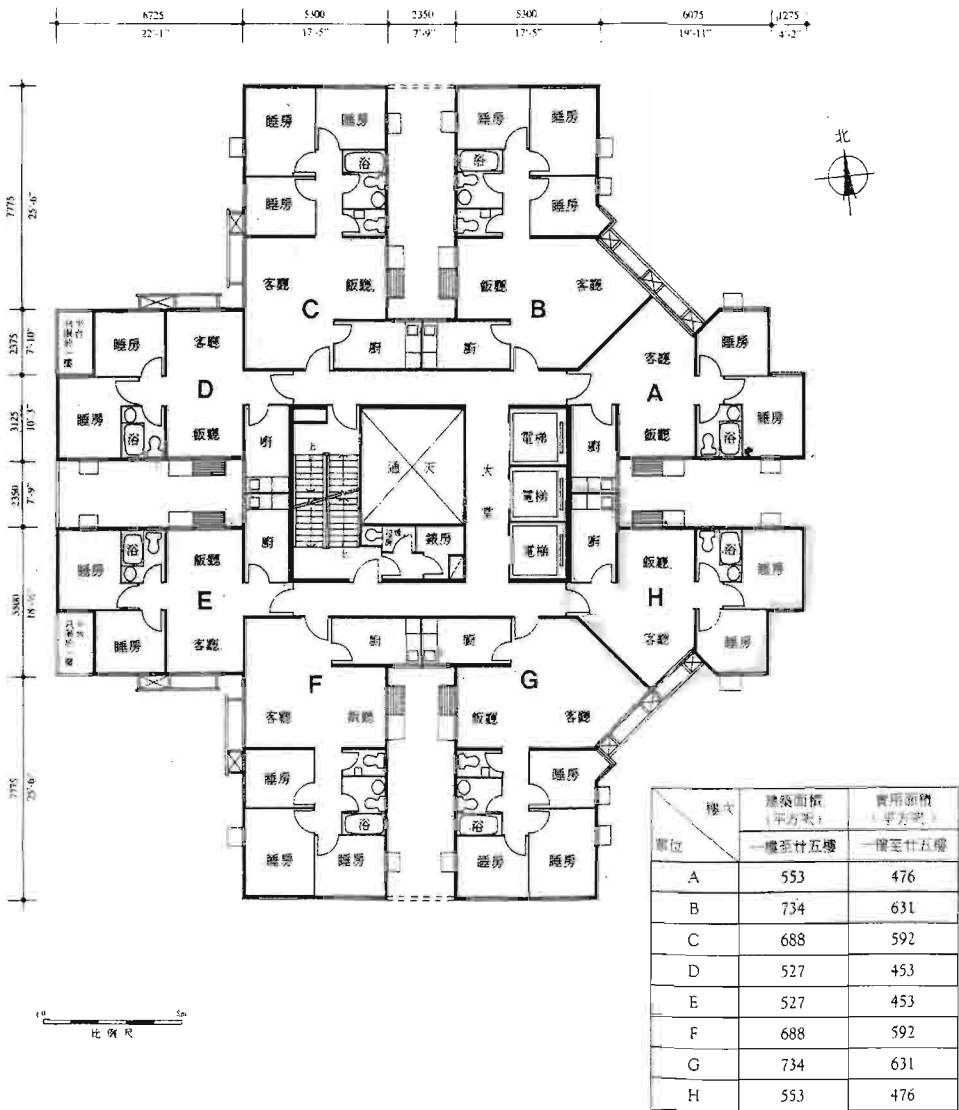


第三座 (一至二十五樓平面圖)

康輝閣

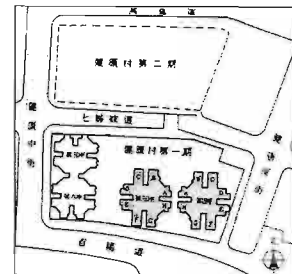


康輝閣全圖

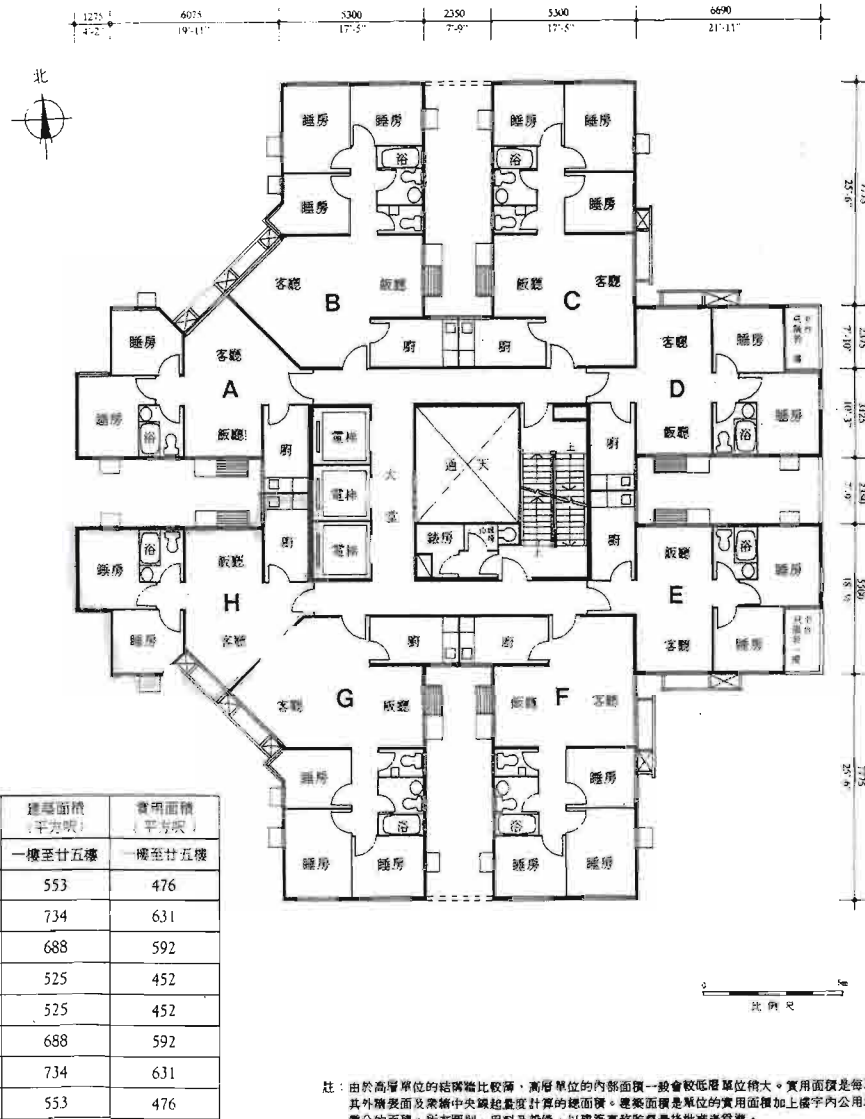


第四座 (一至二十五樓平面圖)

康宏閣



康宏閣全圖



註：由於高層單位的結構牆比較薄，高層單位的內部面積一般會較低層單位稍大。實用面積是每單位由其外牆表面及業權中央線起量度計算的總面積。建築面積是單位的實用面積加上樓宇內公用地方所攤分的面積。所有圖則、用料及設備，以建築事務監督署核准批准為準。

Total Management Shares of 2,300 are allocated to various parts of Block 4 as follows : -

Flat	A	B	C	D	E	F	G	H
Shares								
Floor								
25th	10	13	13	10	10	13	13	10
24th	10	13	13	10	10	13	13	10
23rd	10	13	13	10	10	13	13	10
22nd	10	13	13	10	10	13	13	10
21st	10	13	13	10	10	13	13	10
20th	10	13	13	10	10	13	13	10
19th	10	13	13	10	10	13	13	10
18th	10	13	13	10	10	13	13	10
17th	10	13	13	10	10	13	13	10
16th	10	13	13	10	10	13	13	10
15th	10	13	13	10	10	13	13	10
14th	10	13	13	10	10	13	13	10
13th	10	13	13	10	10	13	13	10
12th	10	13	13	10	10	13	13	10
11th	10	13	13	10	10	13	13	10
10th	10	13	13	10	10	13	13	10
9th	10	13	13	10	10	13	13	10
8th	10	13	13	10	10	13	13	10
7th	10	13	13	10	10	13	13	10
6th	10	13	13	10	10	13	13	10
5th	10	13	13	10	10	13	13	10
4th	10	13	13	10	10	13	13	10
3rd	10	13	13	10	10	13	13	10
2nd	10	13	13	10	10	13	13	10
1st	10	13	13	10	10	13	13	10

管理業權份數 (Management Shares)

Total Undivided Shares of 11,600 are allocated to various parts of Block 4 as follows : -

Flat	A	B	C	D	E	F	G	H
Shares								
Floor								
25th	51	68	64	49	49	64	68	51
24th	51	68	64	49	49	64	68	51
23rd	51	68	64	49	49	64	68	51
22nd	51	68	64	49	49	64	68	51
21st	51	68	64	49	49	64	68	51
20th	51	68	64	49	49	64	68	51
19th	51	68	64	49	49	64	68	51
18th	51	68	64	49	49	64	68	51
17th	51	68	64	49	49	64	68	51
16th	51	68	64	49	49	64	68	51
15th	51	68	64	49	49	64	68	51
14th	51	68	64	49	49	64	68	51
13th	51	68	64	49	49	64	68	51
12th	51	68	64	49	49	64	68	51
11th	51	68	64	49	49	64	68	51
10th	51	68	64	49	49	64	68	51
9th	51	68	64	49	49	64	68	51
8th	51	68	64	49	49	64	68	51
7th	51	68	64	49	49	64	68	51
6th	51	68	64	49	49	64	68	51
5th	51	68	64	49	49	64	68	51
4th	51	68	64	49	49	64	68	51
3rd	51	68	64	49	49	64	68	51
2nd	51	68	64	49	49	64	68	51
1st	51	68	64	49	49	64	68	51

不可分割業權份數 (Undivided Shares)